



OUTWOOD NEWS

**OUTWOOD
NEWS**

**COPY DATE
NOVEMBER**

**Friday
14th October**

*Late copy cannot
be inserted without
prior agreement.*

Outwood Matters
is the village email
distribution list.
If you would like
to be included on
this please email
outwoodsmatters
@gmail.com

Please submit
copy to:
anne.morle
@outwood.org



OCTOBER 2022

- ✓ Mot's
- ✓ Servicing
- ✓ Cambelts
- ✓ Diagnostics
- ✓ Clutches
- ✓ Batteries
- ✓ Tyres
- ✓ Exhausts
- ✓ Brakes
- ✓ Air con. etc.



A friendly, trustworthy, family run business which has been built upon recommendation since 1966.

For more information...
Please check out our website or give us a call.



All work is carried out in-house

Good Garage Scheme Member Since 2007



01342 842132

www.windmill-garage.co.uk

Outwood Common, Outwood, Surrey, RH1 5PW

Morr & Co

The new name for Morrisons Solicitors.

Morr & Co support clients on their legal journey, helping them plan for the future, deal with the unexpected and prosper through life's ups and downs.

In January 2022, Morrisons Solicitors rebranded to Morr & Co, uniting the Morrisons Group brands across the region (including Morrisons Solicitors, Wheelers Solicitors, and Harrops & Hepburn Solicitors).

The law firm for business and life



☎ 01883 723712
@ info@morrlaw.com

Offices across Surrey, Hampshire & South West London



Ukrainian 'Get together'



"Outwood for Ukraine" held a Ukrainian Lunch for almost 80, guests and hosts, from all over the County. On a perfect day (if a little too warm !), many friendships were made, and phone numbers exchanged.

The delicious food was arranged and overseen by Latvian resident Lauma Kazusa, who organised various ladies to cook their own Ukrainian recipes!

We must thank Brightleigh Farm, Outwood, and Top Cat Tents of Machynlleth, For their support, and the Outwoodians who helped setting up, clearing away, and organising lifts.

A few young women sang songs from their homeland. and the day ended with everyone singing an emotional Ukrainian National Anthem with hands on hearts.

The day was considered a great success by all

CHURCH NEWS

Rector's Ramblings

*What we call the beginning is often the end
And to make an end is to make a beginning.
The end is where we start from . . .*

Words from TS Eliot's Four Quartets that I read, many years ago now, at my father's funeral and which have come back to me time and time again in recent weeks. We have all reflected on the life of our late Queen, but we have also celebrated our new King. The phrase "The Queen is dead, long live the King" represents an instantaneous transition; the end of one reign is immediately the beginning of another.



Last month, as I watched the ceremonies throughout the day of the Queen's funeral, time and time again I was aware of the recurring gently shouted command "Bearer party . . ." as those eight soldiers carefully and sensitively carried the Queen's coffin out of Westminster Hall, in and out of the Abbey, into St George's, Windsor and finally, in the evening and seen only by her immediate family, to her final resting place. The word bear, which means to carry, is the origin of the words *born* and *borne*. Our mothers bear us, they are our bearers and we are borne by them until we are born. At the end of our life the people who carry our coffins are also bearers and it has always struck me that birth and death are, as it were, two sides of the same coin – we are born into this world and we are born out of it:

*to make an end is to make a beginning.
The end is where we start from . . .*

And now, where we start, is with the reign of our new King, Charles III. And where he started, on his Accession Day, was by affirming his role as Defender of the Faith. Speaking about his religious role in a speech made to more than 30 faith leaders from various religions at a reception in Buckingham Palace last month the King said that whilst he was a committed Anglican Christian, he understood that it was also his duty as Sovereign:

*to protect the diversity of our country, including by protecting the space for
Faith itself and practice through the religions, cultures, traditions and beliefs
to which our hearts and minds direct us as individuals.*

I rather like that phrase 'protecting the space for Faith' and I feel deeply that for each of us, protecting space is at the heart of our spiritual life. Whatever our particular

CHURCH NEWS

faith or beliefs, each of us needs to make space in our lives, space for a time for just being, not doing, a time for stillness and a time for silence – and those three things are at the heart of prayer.

King Charles values those things. He values the time he has spent on retreat with the Greek Orthodox monks on Mount Athos (as did his father, brought up in the Greek Orthodox tradition and also something which reminds me of the time I spent with the Greek Orthodox monks on Mount Sinai) and he also values the time he spends in his private chapel, built in the grounds of Highgrove House, and commissioned by him to mark the new millennium. We are blessed to have as our King a man who has spirituality at the core of his being.

And though you may not be able to stay in Orthodox monasteries in far-away countries or build a private chapel in your garden, you can still make space for God. The Orthodox priest, spiritual writer and broadcaster Anthony Bloom told of how he was once asked by a woman in a care home why, despite constantly repeating her prayers throughout her life, she had never felt God's presence. He replied: *"If you speak all the time, you don't give God a chance to place a word in."* He told her to sit in her room, light a candle and then to take up her knitting and knit for fifteen minutes. *"But,"* he said, *"I forbid you to say one word of prayer. You just knit before the face of God and try to enjoy the peace of your room."*

The woman was sceptical, but she followed his advice and some time later she spoke to him again. She said how she had followed his advice, enjoyed doing nothing for fifteen minutes without feeling guilty, appreciated her room and the view from it for the first time in years, and then began to knit. And then she said:

'And I became more and more aware of the silence. The needles hit the arm rest of my chair, the clock was ticking peacefully, there was nothing to bother about, I have no need of straining myself, and then I perceived that this silence was not simply an absence of noise, but that the silence had substance. It was not absence of something but presence of something. The silence had a density, and richness, and it began to pervade me. The silence around began to come and meet the silence in me.'

A time for just being not doing, a time for stillness and a time for silence. Time for these three things is important for our new King. Let each of us, as his subjects, seek to make time for them too.

With love and prayers

Nicholas

Email: nicholas.calver@btinternet.com



MR Computing Ltd



The computer repair shop that comes to you at an agreed time/day, no waiting around and no need to transport your IT equipment.

- **NO FIX NO FEE**
- **Visiting computer/IT support for home & office**
- **New computer supply & setup to be familiar**
 - **Reliable wireless range improvement**
- **Computer speed up, repairs, data recovery**
 - **Remote support**



Call: 01342 349109 / 0800 6129534

Email: office@mrcomputing.net

www.mrcomputing.net

Reviews: [fb.com/mrcomputingltd/reviews](https://www.facebook.com/mrcomputingltd/reviews)

Outside In Locksmiths

Available 24 Hours

0800 772 39 72

Domestic, Commercial, Landlord.

Lock Outs, New Locks,
Lock Repairs.

Wooden, Upvc, Composite
and Aluminium doors locks
repaired.

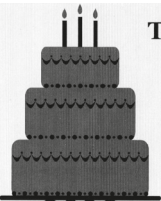
Fully Insured.

Free Quotes.



Checkatrade

outsideinlocksmiths.co.uk



The Pink Cake Company

tiered wedding cakes
cupcake towers
cakes with edible images
feature cakes
afternoon tea cakes



lynne.messenger@hotmail.co.uk
07780 705961



local babysitter available !

- lives in outwood
- fifteen years old
- babysitting experience
- happy to cook + entertain kids

contact me - olivia
07521 460413

miss.oliviam@icloud.com

D C Read Builders & Landscapers



'Quality Workmanship'

01342 843023

info@dcreadbuilders.vpweb.co.uk
www.dcreadbuilders.co.uk

07706 467803

SEPTEMBER REPORT

There's nothing like home grown entertainment and at our September meeting our members were treated to a performance by our Play Reading group, who get together monthly under the direction of Barbara Garton to share aloud different scripts. The comedy drama chosen this time was called "To See Ourselves..." and it depicted a group of country women who were forced by the end to admit that they had developed some extreme habits which others found amusing yet irritating: preferring animals to human company; over-zealous cleanliness at home; financial meanness. It was a fun performance that inspired laughter and some introspection too. The characters presented were played with gusto, and the audience recognised that it is far too easy to lose perspective of ourselves!

The Outwood Show took place on 3rd September and it was very well attended. Luckily, our ladies had provided lots of delicious cakes for the tea stall and many of the craft and horticultural entries were created by WI members from within the community.

Monthly clubs continue to be well attended; new members of the Mah Jong group have necessitated an expansion of sessions and it is our hope to provide further craft opportunities for our members in the future.



Marcia Blades, last year's mah jong champion, instructs two new members - Sarah Johns and Helena Devlin – on how to make the best of their tiles.

We join with the rest of the country in paying our respects to Her Majesty the Queen and we have adapted our Outwood postbox topper to reflect this:

Our next meeting is on Tuesday 4th October when our speaker will be Alison Hoyland, who will be advising us in her talk "Never judge a book by its cover" on how to present ourselves in a positive manner – the perfect follow up to this month's play performance!

Elizabeth Dyke



Amie Electro

Amie Electro the friendly and professional Electrician you can trust.
Residential and commercial, single phase and three phase.
Complete and partial rewires.

Fusebox replacement and upgrades.
Inspection, testing, certification, maintenance and more!

Susanne Heldwein trading as
Amie Electro. Thorough,
methodical and solution
oriented work attitude. Active, positive,

straightforward and ethical approach. All works
carried out personally.. taking good care of
your property. Offering the full range of
domestic and commercial electrical services.

Qualified with distinction as electrical installer
(Munich, Bavaria, West Germany 1990). Established
in the UK in 2011. City & Guilds Level 3 Diploma
in Electrical Installations.

Part P registered.



Domestic & Commercial

Single Phase & Three Phase

Amie Electro

Part P registered

01342 888654 / 07951 179146

mail@amie-electro.co.uk

Find the reviews

@ www.amie-electro.co.uk

FROMAINT PEACEFUL GARDENS



Would you like your grass cut every day?

Large or small garden

We can help

Unique automated grass cutting service

From only £9/week

50% OFF 1st Month Grass Cut

Free quote & garden survey

Garden Maintenance professional
Robotic lawnmower specialist
Fully insured

Contact Bob Fromant

M: 07828 304923

E: fromaint@gmail.com

W: www.fromaint.co.uk

Quote Outwood News

Credit cards
accepted

HOMWOOD



HEATING

PLUMBING & BATHROOMS

- Plumbing • Boiler • Bathroom – Installations & Maintenance
- Accessible Bathroom Adaptions • Wet Rooms • Cloakrooms
- Electrics, Plastering, Carpentry, Tiling, Decorating & General Maintenance
- Boiler Service • Landlord Gas Safety Inspections • Powerflushing

FREE ESTIMATES & ADVICE call 07850 373955 or 01737 823888

www.homewoodheating.co.uk



NATURE WATCH

As we will all recall the heat wave and drought that started in June continued through July and finished with a flourish in August with record temperatures throughout the country. In a shade position in our garden the mercury rose to 37°C before the heat started to recede and we were treated to a number of thunderstorms, some without any rain but providing plenty of aerial fireworks. Within a few days the brown, burnt grass across the countryside and gardens miraculously began to turn green and after more rain quickly recovered to once more become our green and pleasant land. However, a lot of damage has been done to trees, particularly older specimens, that had been weakened by diseases like an old oak on the bridleway behind the church, which produced leaves in the spring, but finally succumbed to the heat and lack of water. It had also developed a magnificent bracket fungus, which I photographed only to find it shattered on the ground two days later clearly helped on its way. Despite the rock-hard nature of the ground, the day following the first decent period of rain, I spotted a fresh fungus had appeared, to be followed in early September by many more and varied species of fungi and it promises to be a good year for them. I've remarked in the past about the number of elm saplings in the village that seem to be avoiding Dutch elm disease and have reached a height of over ten metres. By mid-August I noticed their leaves had turned brown and I presumed they had been caught out by the elm bark beetle, however with the arrival of rain most of them have put on some fresh growth of leaves. The fruit crop of blackberries was poor but a few oak trees have produced heavy yields of large acorns. Yet another very odd phenomenon is the way in which many garden plants have flowered for a second time, such as our spring flowering shrub *Kerria japonica*, herbaceous geranium and pinks.

This year insect numbers have been down locally with fewer butterflies, damsel and dragonflies. Last year wasps were a real problem whereas this year they have been noticeable by their absence but at least soft fruit and plums have been easier to harvest without the risk of stings. Against this downbeat background came a high note from Julie Biddles who spotted a Purple Emperor butterfly (*Apatura iris*) in her garden. This butterfly, which is the second largest in the UK, has a wingspan of between 7.5 - 8.5cms; the female has mainly brown wings with white splashes and eye spots, whilst those of the male are darker and have a bluish, purple sheen on the upper side.



Purple Emperor Butterfly
by Julie Biddles

They are very elusive spending most of their time in the tops of oak and goat willow, and can be found in southern and eastern England. They are often attracted down to ground level to feed on animal droppings from which they extract minerals. Other reports have included one from Nick and Pat Roberts. Pat spotted a Jersey Tiger hawk-moth (*Euplagia quadripunctaria*) on lavender in their garden. This moth is one of our most colourful and the wings are brown with white stripes and black eye spots on orange hind-wings. The other is from Sue and Trevor Turner who reported a Humming-bird hawk-moth (*Macroglossum stellatarum*) in their garden in August. This moth, which is a summer migrant from southern Europe, feeds on various wild flowers including bedstraw and honeysuckle, using a hovering action whilst extracting nectar with its proboscis.

Mike F Johnson



ROYAL BRITISH LEGION
Outwood Branch
WE WILL REMEMBER THEM

POPPY LUNCH

LLOYD HALL

AFTER THE CHURCH REMEMBRANCE SERVICE

SUNDAY 13TH NOVEMBER

12.30 for 1.00pm

£25.00

Cash Bar and Raffle

ALL WELCOME

whether members or not

Tickets available from:

Jo Barber - 07967 157402

Email: jombarber@hotmail.com



ROYAL BRITISH LEGION

Outwood Branch

WE WILL REMEMBER THEM

DEATH OF HER MAJESTY THE QUEEN

It is with deepest sorrow that the Royal British Legion marks the death of our Sovereign and Patron, Her Majesty Queen Elizabeth II. The Queen has served as Patron of the Royal British Legion since 6th February 1952. We are immensely thankful for her faithful service and we join the entire Armed Forces community in mourning her loss. Her unwavering commitment to the Armed Forces will be deeply missed and our sincere condolences are with the Royal Family at this time.

The Queen always maintained a close relationship with the British Armed Forces. She was herself a veteran, having served in the Second World War as a driver and mechanic with the Auxiliary Territorial Service. Upon her accession to the throne, she became Commander-in-Chief and Head of the British Armed Forces and those of the Commonwealth Realm. She was known for her devotion to the Armed Forces and her keen interest in their affairs, serving as an inspiration to them all.

The Queen attended her first performance of the Royal British Legion Festival of Remembrance as 19-year-old Princess Elizabeth in 1945. As Queen, she attended every performance but for three, when she was either in childbirth with Prince Charles, on Commonwealth tour, or experiencing ill health.

PAYING TRIBUTE TO THE QUEEN

Books of Condolence will be available to the public in all local churches, including St Mary's Horne, where a Choral Evensong service of commemoration and thanksgiving was held on Sunday 18th September.

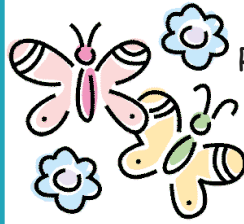
The Standard of the Outwood Royal British Legion was paraded at this service.

A contingent of Royal British Legion Standards led by the National Standard participated in the procession on the day of the Queen's funeral with the Standards being lowered at the Cenotaph as her coffin passed.



Connecting the
Arts and Crafts
community

UKCraftFairs.com



BABYSITTING

Reliable teenage
girl from
Outwood
available for
babysitting.

Please contact Aine Martin
07462 275707

Local teenager looking for;

Dog Walking, Dog Sitting,
Baby Sitting, House Sitting,
Gardening/Lawn Mowing,
Car Washing
and any other small jobs.

Please contact Patrick Smith
patchgymnast@aol.com
07884 121110

PAT CARTER

For all your electrical work

Tel: 01342 843883

Mobile: 07711 478890

Ballast • Ceramic Tiles
Dulux Paint • Fascia • Fencing
Gardening Products • Guttering
Household Goods • Insulation • MDF
Plywood • Power Tools • Roof Windows
Sand & Cement • Timber • Underground Plumbing • uPVC
All your needs under one roof!

MITCHELLS
BUILDING CENTRE

1-9 Station Road, Horley, Surrey, RH6 9HW
www.mitchellsofhorley.co.uk

Telephone 01293 820890

Monday-Friday 7.30am-5.30pm • Saturday 8.00am-4.00pm

FREE Local Delivery . FREE Parking

YOUR LOCAL TRADE & D.I.Y CENTRE



Burstow Friends of St Catherine's Hospice

Back by popular demand!

Call My Bluff Wine Tasting Evening

Saturday October 29th

Lloyd Hall, 7pm for 7.30pm

Think you know your Sancerre from your Sauvignon Blanc, your Merlot from your Malbec?



Join us for a wine tasting event with a difference
- in the style of the game show 'Call My Bluff'.

Put your wine knowledge to the test in this light-hearted evening.
Tickets £30 including 2 Course Supper with coffee and an exciting
selection of wines for tasting plus £5 worth of raffle tickets.

Please book early to avoid disappointment by contacting Laura
on 01342 843228 or email stch@alchemists.me.uk

Thank you from the ladies of St Cath's team.

B&P

Property Maintenance - Gutter Cleaning - Pressure Washing
Fascias - Cladding - Soffits - Pointing
Driveways - Re-Turfing



Tel: 07948 187051





**Home or Office
Desktop – Laptop – Network
Specialists**

We Come to You!

On-site or pickup and return service

Fixed price repairs - 1000+ Clients
30 yrs+ experience - No Fix No Fee

Call Steve or Caroline

01342 834267

07771 666759

enquiries@sensiblepcolutions.co.uk

www.SensiblepcSolutions.co.uk

**KEEPING OUTWOOD
BUG FREE FOR 25 YEARS**

ANTIQUE FURNITURE RESTORATION

**ALL ASPECTS OF
FURNITURE REPAIRS AND
POLISHING UNDERTAKEN**

**INCLUDING MODERN
FURNITURE**

30 YEARS' EXPERIENCE

**FREE ADVICE AND
ESTIMATES GIVEN - CALL**

STEVE PEACOCK

01883 743879

lewis white

Lewis White Estate Agents Ltd

Somers House, Linkfield Corner, Redhill, RH1 1BB

01737 245779

email:info@lewiswhite.net

**Announcing our new coverage of Outwood area
Award winning Estate Agents**





CHARTERED DESIGNERS PROJECT MANAGERS

Architecture ❖ Interior Design
Engineering ❖ Surveying
Town Planning ❖ Project Management

**For all aspects of building
design and construction**

Contact Bill Morle FCSD MFPWS

01342 843336

email: bill@a-bdesigns.co.uk



Cheeld Wheeler & Co

CHARTERED CERTIFIED ACCOUNTANTS

Taxation and Accountancy services for:

- Individuals
- Charities
- Partnerships
- Limited Companies

Call: **01737 224891**

www.cheeldwheelerandco.co.uk

Helgaz Flowers

Modern & Traditional Floristry

Flowers to suit all budgets

**Weddings, Funerals
and all other occasions**

01342 843777

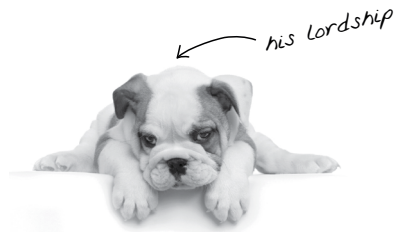
helgazflowers@gmail.com

www.helgazflowers.co.uk

Please like us on 

1b Wheelers Lane, Smallfield, Surrey RH6 9PT

Treating Your Pets Like Royalty



Crown Vet Clinic

1 The High Street
Nutfield, Redhill,
Surrey RH1 4HH
crownvets.com
t: 01737 822250

Opening times:
Monday - Friday
8.30am - 6.30pm
Saturday
9am - 11.30am

Miss Nicola Williams
Mr Michael Taylor

Consultation by
appointment



**NOT JUST
TRAVEL**

Sally Bosman

Your friendly, local travel expert!

If you can dream it ...
I can book it!

P: 01737 789355
M: 07498 209658
E: sally.bosman@notjusttravel.com
W: <https://sallybosman.notjusttravel.com>



Outwood Reflexology



Do you want to find an oasis of relaxation and calm in our picturesque village?

Are you looking for a way to unwind, improve your mood and de-stress in a peaceful environment, just minutes from your home?

Restore that feeling of well being, improve your sleep and take time for yourself

Reflexology is suitable for everyone, and appointments are available throughout the week

Vouchers available for that perfect gift!

tel: 07741 300 720

email: outwoodhome@gmail.com





Conservation & ACCESS

Andrew Wright

Lambert's Place, Brickfield Road, Outwood, Redhill Surrey RH1 5QX

01342 841756 or mobile 07770 887682

info@conservationandaccess.co.uk

Outwood Trim Trail opened by Dr Gillian Orrow formally of Smallfield Surgery,
now Director of Growing Health Together on Thursday 15th September 2022

History

Three years ago the National Trust kindly surfaced a section of Outwood Common between Outwood Butchers and Church Walk. As us Outwoodians know only too well, the thick clay soils during the winter months makes many areas almost unpassable, so this new path was extremely popular.

Prior to the pandemic, Outwood Parish Council were investigating ways in which they could improve the health and wellbeing for locals and our small numbers of visitors. It's well understood that being out in nature, is good for our mental health and a healthy body helps promote a healthy mind. The addition of something that has the potential to improve fitness whilst outside seemed very appealing.

The Parish Council, worked extremely hard to agree terms with the National Trust and also secure grant funding from Surrey County Council Members' Allocation, Tandridge Together Community Fund and Gatwick Airport Community Trust Fund to meet the majority of the costs.

Health

Trim trails are growing in popularity due to their ability to offer diverse benefits for all ages. Working with the National Trust and Andy Wright, (formally of the National Trust, but now running his own business, Conservation and Access), various options and styles were considered before deciding a natural looking trim trail would best suit Outwood's rural environment.

Sustainability

The timber was purchased from sustainable woodlands locally, near Dorking. Many people wonder why we didn't use the ash trees that had to be felled due to disease. Unfortunately, ash timber is no where near as durable as the Douglas fir we used. The Douglas should be good for 15yrs plus, whereas the ash would be unstable within 5yrs.

Enjoyment and benefits

Given that these logs don't represent anything, (such a pirate ship), there is an opportunity for young people to be creative in how they interpret the structures for play.

Those who want a cardio workout can vigorously use a trim-trail, whereas for others there are benefits from simply balancing along the logs. Balance training becomes increasingly beneficial as we age. Better balance leads to fewer falls and associated injuries.

We hope everyone will enjoy this new resource on Outwood Common.

www.conservationandaccess.co.uk



OUTWOOD PARISH COUNCIL

**OUTWOOD PARISH COUNCIL ARE DEEPLY SADDENED BY
THE DEATH OF HER MAJESTY QUEEN ELIZABETH II
AND EXPRESS THEIR SINCERE CONDOLENCES TO THE ROYAL FAMILY**

THANK YOU ROSIE!

We say farewell to one of our Councillors, Rosie Yeldham. Rosie's long tenure as a Parish Councillor will be particularly remembered for the installation of the children's playground in the Lloyd Hall grounds. Rosie was instrumental in acquiring this facility for the village. We are so sorry to lose her on the council but we know that she will continue to play a significant part in village life.

Outwood Parish Council would like to thank David Crittall, the Show Committee and all the volunteers for putting on another outstanding event this year.

Our National Trust Ranger Eleanor Yoxall left Harewoods in September. At the time of writing, we don't know who her successor will be. Eleanor has worked very hard looking after the Harewoods Estate. We will miss her skills and practical knowledge very much. We wish her well for the future.

TRIM TRAIL

The trim trail is now fully operational and was opened by our local GP Dr Gillian Orrow on 15th September. Thanks to Surrey County Council Members' Allocation, Tandridge Together Community Fund and Gatwick Airport Community Trust Fund for funding this project.

If you want to get in touch, please remember to check our contact details on the opposite page, so your enquiry doesn't get missed

MEMBERS OF THE PUBLIC ARE INVITED TO ATTEND ALL OUR MEETINGS

Next meeting – Wednesday 5th October 2022 7.30pm in the church room

For more detailed meeting reports and any current planning applications please visit the website at www.outwood.org and click on Parish Council

CONTACT DETAILS

PARISH COUNCIL MEETINGS

Meetings are held each month except August and December

PARISH COUNCILLORS

Mary Baldock	Planning & National Trust	baldock.mary@googlemail.com	842358
Barry Gosling	Planning & Lloyd Hall	bagosling651@gmail.com	844105
Jane Howard	Chair - Footpaths & Bridleways	janeweston899@btinternet.com	842456
Nick Wyer	Vice Chair - Roads & Verges, Wells Field	nickwyer56@gmail.com	841664

PARISH CLERK

Rodabe Rudin
Email: parish.clerk@outwood.org Tel: 01342 629165
Address: 2 Dirty Lane, Ashurst Wood, West Sussex RH19 3RY

DISTRICT COUNCILLORS

Kevin Bourne	07963 833154
Mick Gillman	01342 893233
Colin White	01342 893010

LLOYD HALL

Booking Enquiries

Telephone 07435 882640
Email: lloydhall.outwood@hotmail.co.uk

Management Committee Secretary

Jane Forbat 01342 842834
Email: lhmc@lloydhall.org

SURREY COUNTY COUNCIL

General	03456 009009
Pot Holes	0300 200 1003
Verge Cutting	01342 837666

www.surreycc.gov.uk

NATIONAL TRUST

Harewoods Estate Office 01342 843225
www.nationaltrust.org.uk

MEMBER OF PARLIAMENT

Claire Coutinho
Email: claire.coutinho.mp@parliament.uk
House of Commons (Direct Line) 020 7219 7643
Constituency Office Oxted 01883 715782

TANDRIDGE DISTRICT COUNCIL

General 01883 722000

Noise, dangerous structures,
pest control, pollution, flooding,
tree enforcement etc.

Amenity Services 0800 7834843

Abandoned cars, flytipping,
graffiti or vandalism.

Rubbish collection BIFFA 01342 837346

Removal of unwanted vehicle 01883 732998

www.tandridge.gov.uk

GATWICK AIRPORT NOISE

Automated line 01293 311568

Flight tracker on Gatwick Airport website

REDHILL AERODROME NOISELINE

Please copy any response received 01737 888123
using this Noiseline to the Parish Clerk

NEIGHBOURHOOD WATCH

Mark Osland
Email: outwoodnw@gmail.com

POLICE

Emergency Attendance 999
Report non-urgent incidents 101

Crime Prevention Advice

Mark Howells
Email: mark.howells@surrey.pnn.police.uk

PS Brooker is the Southern Sergeant

Email: Joshua.Brooker@surrey.pnn.police.uk

The PC's for our area are Lee Newman and Rowan Futter

Email: Lee.Newman@surrey.pnn.police.uk

Email: Rowan.Futter@surrey.pnn.police.uk

USEFUL NUMBERS:

PEST CONTROL (Rats, wasps etc.)

Balcombe Pest Control 01444 811916

BIFFA Special Collections 01883 712333
(Option 2)

Fridges, Freezers, Furniture etc.

OUTWOOD'S PUBLIC TRANSPORT

**Note: 315 stops (and drops off)
anywhere in the village when hailed.
For simplicity the times are given for
Millers Lane.**

**Please make timing adjustments
for stopping elsewhere.**

315 Cruiser Service

Times to and from Redhill, but this bus also
goes to Dormansland via Smallfield

Monday to Friday only

Leaves Millers Lane	07.48
	10.25
	13.50

The 10.25 and 13.50 buses also go
to East Surrey Hospital via Redhill.
Buses leave the hospital at 12.15
and 17.05 to return to Outwood.

Leaves Redhill Bus Station	09.00
	12.25
	17.15
<i>Fridays only</i>	15.37

On school days there are also
buses from Millers Lane at 07.45

East Surrey Rural Transport ESRTP

Bookings and information: 01883 701270

Website: www.rtp@esrtp.org.uk

*Information provided by
Outwood Parish Council E&OE*

OFFICE OF THE POLICE & CRIME COMMISSIONER FOR SURREY

**Lisa Townsend
Police and Crime Commissioner**



The public can contact the Office of the Police
and Crime Commissioner in the following ways:

Telephone: 01483 630 200

Email: SurreyPCC@surrey.police.uk

Website: www.surrey-pcc.gov.uk

COMMUNITY SPEEDWATCH

**Are you willing to take
on the position of local
co-ordinator held for
many years by
Nigel Shaw?**

**Please contact
Outwood Parish Council
for more information.**



St John the Baptist, Outwood

Services in October

Sunday 2 October

8 am Book of Common Prayer said
Communion at Saint Mary the
Virgin, Horne

11 am Morning Worship

Sunday 9 October

11 am Holy Communion

Sunday 16 October

11 am Holy Communion

Sunday 23 October

11 am Holy Communion

Sunday 30 October

11 am Morning Worship

Sunday 6 November

8 am Book of Common Prayer said
Communion at Saint Mary the
Virgin, Horne

11 am Holy Communion

4 pm All Souls service at Saint
Bartholomew, Burstow

An opportunity to remember loved ones who have died and to light a candle in their memory. Names will be read out and if you would like someone remembered in this way, contact Nicholas (01342 842224; nicholas.calver@btinternet.com)

DIARY OF EVENTS

*** Events planned subject to current Government guidance. ***

OCTOBER

- Tuesday 4th** **WI MEETING - "Never Judge a Book by its Cover"**
2.30pm - Lloyd Hall
- Wednesday 5th** **PARISH COUNCIL MEETING**
7.30pm - Church Room, Wasp Green Lane
- Tuesday 25th** **OUTWOOD FILM CLUB**
"Downton Abbey - A New Era"
7.30 for 8.00pm - Lloyd Hall
- Saturday 29th** **ST. CATHERINE'S HOSPICE**
Call My Bluff Wine Tasting Evening
7.00 for 7.30pm - Lloyd Hall

NOVEMBER

- Tuesday 1st** **WI MEETING - ANNUAL MEETING**
2.30pm - Lloyd Hall
- Saturday 5th** **HAM - BONFIRE & FIREWORKS** (*see page 27*)
From 5.30pm - The Bell
- Sunday 13th** **ORBL - POPPY LUNCH** (*see page 10*)
12.30 for 1.00pm - Lloyd Hall
- Friday 25th** **OHS - AGM & SUPPER**
TBC - Lloyd Hall
- Tuesday 29th** **OUTWOOD FILM CLUB**
7.30 for 8.00pm - Lloyd Hall

OUTWOOD VILLAGE WEBSITE
www.outwood.org

The website Diary page, maintained by Outwood News, lists all village events (*of which we are aware*) taking place up to a year in advance.

Why not take a look to avoid a clash of dates!

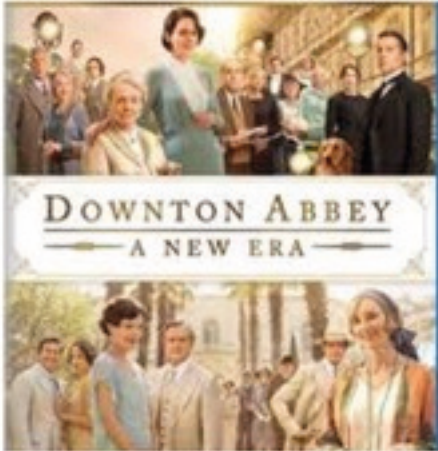
LLOYD HALL

FILM CLUB

OUTWORLD



Lloyd Hall



25th October
7.30 for 8.00pm
Every last Tuesday of the month

Drinks, Popcorn and Ice Cream
available

Members £3
Non Members £5
Join ? £7.50 per year.

CHRISTMAS MARKET AT WOLDINGHAM SCHOOL



We will be hosting an outside Christmas Market in the Quad at Woldingham School on **Friday 25th November**.

The market will be held as part of Woldingham School's 180th anniversary celebratory events and will be a very special outdoor festive shopping event. It will feature exhibitors selling luxury goods and artisan fayre and will run from **4.30pm – 7.30pm** in the beautiful quadrangle, adjacent to the mansion. This is the oldest part of the buildings and will provide a wonderful atmospheric backdrop to the market.

The market is a charity event.

It is raising money for bursaries to educate Ukrainian refugee girls who are staying with local families

and will have plenty of festive catering, Christmas lighting and live music.

GARDEN MAINTENANCE

We are a friendly and reliable family run business, specialising in complete all year round garden maintenance.

- GRASS CUTTING
- WEEDING
- HEDGE CUTTING AND SHAPING
- SEASONAL TIDY-UPS
- JUNGLE CLEARANCE
- REGULAR VISITS
- MAINTENANCE PLANS
- FULLY INSURED

FROM PRIVATE
INDIVIDUALS TO
MANAGEMENT
COMPANIES



TRUSTED
LOCAL BUSINESSES ✓

MOWING MACHINE GARDENERS

For a no-obligation free estimate please call

01342 529365 or 07771 922281

www.themowingmachine.co.uk

DPC

Groundworks Ltd

Contact: David Bridges

info.dpcgroundworks@gmail.com

Instagram : [dpcgroundworks](https://www.instagram.com/dpcgroundworks)

Fully insured
Private and commercial
General maintenance
Drainage and Klargesters
Land drains
Utility services
Earthworks and machine hire
Concrete surfaces
Paving
Swimming pools
Extensions
General building

07969 661014

01342 843883
07711 478890

PART P CERTIFIED
NICEIC APPROVED



Fusilier

Electrical Limited

Contact Pat or Adam Carter
info@fusilierelectrical.co.uk

www.fusilierelectrical.co.uk

THE CHARACTER OF PANTOMIME

Come and play with Us!
We have such fun
In a world of make believe
That isn't really there
(And yet it is).
Just for one night a week we say the words
And laugh the way
You never could in "public"
In the real world.
We make the moves - a ritual
(as directed) -
And say what is expected.
And over time the words
become us and we
become real.
We are not serious (Why should we be?)
For this is comedy)
The laughter becomes part of our soul
And sticks the words together
To make us whole.

Come and join Shoestring, and be a part of something transient, but great fun!

Dick Whittington



SAVE THE DATE

“Showtimers and Shoestring”

Nuffield - Friday Evening 9th and Saturday Matinee 10th December

Outwood - Friday Evening 16th and Saturday Matinee 17th December

Details will follow next month

South Tandridge, Redhill, Merstham & Horley Transport.

We have been given a small grant (2022-3)
to provide transport for wellbeing, prescription services,
day centres, clubs, group travel and medical transport
for those living in the above areas (including Outwood).

Please email or call us with any referrals and enquiries
and we will do our best to help.

Indicative costs

0-2 miles £2.50 single

2-5 miles £3.00 single

5-10 miles £3.50 single

10-20miles £5.00 single

COMMUNITY TRANSPORT CONNECTORS: 01883 701279

OR EMAIL US: WELLBEING@ESRTP.ORG.UK

Proud to be part of Surrey Heartlands Health and Care Partnership

East Surrey Regional Transport Partnership

WANT TO ADVERTISE IN OUTWOOD NEWS?

For more information and to check availability
please contact John Mankelow: **01342 842764**

or Anne Morle: **01342 843336**

anne.morle@outwood.org



**Sponsored by
The Bell at Outwood
01342 891835**

5th November 2022

**GRAND BONFIRE &
FIREWORKS DISPLAY**

Gates Open: 5.30pm

Bonfire: 6.30pm

Fireworks: 7.30pm

**MUSIC AND DANCING - CHILDRENS ENTERTAINMENT
WITH SUSY RADIO**

OUTSIDE BARS - BURGERS & BANGERS - RAFFLES

**MARSHALLED PARKING - BRING TORCHES & HI-VIZ
NO SPARKLERS PLEASE**

**On behalf of H - A - M Helping Adolescents at the Marsden
Organiser: jimship@aol.com**

ENTRANCE

£5 ADULTS, £4 CHILDREN (3-16) under 3 yrs free

PAUL RICHARDS UPHOLSTERY

All aspects of Upholstery
and Re-Upholstery undertaken

Fabrics and Foams Available

Quality you CAN Afford

Traditional Workmanship by a Skilled Craftsman



All Upholstery Carried Out In Our Own Workshops

20 Years Experience

*From Chairs to Chaise, Seats to Settees
Portfolio Available*

Free Estimates and Advice

Trindles Farm, Plough Road, Smallfield, RH6 9JN

Phone/Fax: 01342 619277

Mobile: 07949 510877

Paul.Richards.upholstery@gmail.com

CHRIS ANDREWS GARDEN MAINTENANCE

CITY & GUILDS HORTICULTURE

GRASS CUTTING,

HEDGE CUTTING,

TREE & SHRUB PRUNING,

BEDS & BORDERS WEEDED

& MAINTAINED, PLANTING,

GENERAL CLEARING & TIDYING

ESTABLISHED 20 YEARS

REFERENCES AND PHOTOS AVAILABLE

CALL CHRIS

TEL. 01342 841583

MOB. 07810 748852

4 WHITEWOOD COTTAGES, WHITEWOOD LANE,
HORNE, RH9 &JR

L.A. ROWE

PLUMBING & HEATING

Tel: 01342 844 600

Mob: 07801 531 423

Working locally for 17 years

Bathrooms • Showers

Kitchens • Boilers

Central Heating

Gas Installation

Guttering & Leadwork



reg. number
028229W



164781



Gayton Veterinary Group

www.gayton.co.uk



Consultations Monday to Saturday
9am - 7pm

24 hour care at our Redhill surgery
by our own team of vets and nurses.

Gayton House,
40 Hatchlands Road,
Redhill, Surrey RH1 6AT
01737 761475

7 South Parade,
Horley Row,
Horley, Surrey RH6 8BH
01293 771560

OUTWOOD HORTICULTURAL SOCIETY

SUMMER SHOW SATURDAY 3RD SEPTEMBER

THANK YOU TO EVERYONE THAT CAME TO THE SHOW AND MADE IT SUCH A SUCCESS, WE HAD SO MANY AMAZING ENTRIES!



WINNERS 2022

VICTOR CONSTABLE CUP

HAREWOODS CUP

IVOR PAUL CUP

SOCIETY'S CUP

WENDY GORDON CUP

CORONATION CUP

HALL CUP

CHILDREN'S CUP

THE SPUD TROPHY

CHAIRMAN'S CUP

FRANK WITTS' MEMORIAL CUP

GEOFF LE SERVE CUP

SUNFLOWER SHIELD

THE HANDICRAFT PLATE

JACKY SCOBELL

LINDA LODGE

JANET HALL

JANET HALL

JOANNA BARNETT

LIBBY PETERS/JOANNE HARVEY

TOBY BULL

POLLY BARNETT

MICHAEL HARVEY

SALLIE CHARMAN

LINDA LODGE

KATE WOOLER

NOA HALL/SOPHIA RING

JANE WESTON

**PLEASE PUT THE DATE IN YOUR DIARY FOR OUR AGM AND SUPPER ON
FRIDAY 25TH NOVEMBER – DETAILS TO FOLLOW**

ALEX JONES

FUNERAL DIRECTORS

HOME VISITS
AVAILABLE

MONUMENTAL
MASONARY

BEAUTIFUL PRIVATE
CHAPELS OF REST

PRE-PAID
FUNERAL PLANS

Lingfield

Oxted

01342 832534

01883 730383

1 EAST GRINSTEAD ROAD,
LINGFIELD, RH7 6EP

92 STATION ROAD EAST,
OXTED, RH8 0QA

Edenbridge

Forest Row

01732 860047

01342 822399

70 HIGH STREET,
EDENBRIDGE, TN8 5AS

1 ASHDOWN COURT,
FOREST ROW, RH18 5EZ

A TOTALLY INDEPENDENT FAMILY CONCERN

www.alexjonesfuneraldirectors.co.uk

Golden Charter 
Funeral Plans



The
BELL INN



And yes; Christmas is coming! Scott Currie, our Head Chef and Jose our General Manager have both been working hard planning Christmas here at The Bell and our Christmas Fayre Menu is available from 1st to 23rd December (Wednesday to Saturdays).

For the big day, Scott has created an absolute feast of a five-course menu for you to enjoy.

Both to be booked in advance with a 50% deposit taken for Christmas Day.

Now we just need to order the huge village Christmas Tree from Holborn's in Nutfield, for outside the pub and also remember how to erect it, which proved quite a job last year, but Andy Wright saved the day!

We sadly said goodbye to our wonderful Queen and King Charles III has ascended to the throne.

Many will have special memories of her reign. Nick and I still look back in wonder at the day that our invite to Buckingham Palace arrived, completely by surprise, prompting panic. "What on earth are we going to wear?"

However, this awful loss feels, we must look forward and here at The Bell shout
"God save The King".

As mentioned, looking forward we will be playing our part with the Grand Bonfire and Firework organising committee this year. After having to cancel this very popular event last year, in aid of the HAM charity, this local event will be going ahead on Saturday 5th November and The Bell is pleased to be able to fund the fireworks.

This will be an evening of fun and an opportunity to raise funds for HAM.

Provisional plans are in place, our car park will be closed as usual on the evening and, although we'll be serving lunch, our normal dining will be closed on the night. A team of volunteers will be at the entrance by our "Swiss Chalet" to take your cash for entry; £5 adult / £4 children (3-16) under 3yrs free.

We do ask that you don't bring dogs with you on the night. They may not usually be disturbed by fireworks, but a fifteen-minute display can be quite different. Sorry but no sparklers either.

More up-to-date information will be posted on our Facebook page, closer to the time.

Very best and thank you all
for your kind support.

Steve & Nick

**Phone: 01342 891835
www.belloutwood.co.uk**

LLOYD HALL

The building offers attractive and modern facilities for many types of function.

Wedding Receptions, Banquets, Private Parties and Dinners can be accommodated, as well as regular bookings by local groups and organisations.

The Main Hall can seat over 100 while the two rooms of the Chilvers Suite are suitable for smaller meetings and clubs.

The Kitchen is well-equipped with commercial-quality fittings and fixtures.

All or part of the accommodation is available for hire at an hourly or daily rate.

For more information and to check availability contact the Booking Secretary:

07435 882640

enquiries@lloydhall.org



www.lloydhall.org



Building and Electrical Services NICEIC Certified, Trading Standards and 'Which' Approved

Extensions, Improvements, Remodelling

Electrical Installation, Inspection, Testing and Certification to Domestic, Commercial and Industrial Part P compliant.

Find me on 'Trading Standards' and 'Which Trusted Traders' websites where **reputation** and **reliability** matters.

Contact **Chris Yeldham** in **Outwood**

01342 844642 - 07801 519789 **chris@yeloshield.co.uk**

www.yeloshield.co.uk

COFFEE MORNING

**We hold a Coffee Morning at Lloyd Hall
every Wednesday from 11.00 to 12 noon**

Everybody is very welcome to come along and make
some new friends whilst enjoying real coffee
and homemade cake
- only £3 coffee / £2.50 tea
and as much cake as you can manage.

WANT TO ADVERTISE IN OUTWOOD NEWS?

This space is just £90 p.a.- only £9 per edition!
For more information and to check availability please contact
John Mankelow: 01342 842764
or
Anne Morle: 01342 843336

OUTWOOD NEWS COPY DATES

ISSUE

COPY DATE

November

14th October

December & January 2023

18th November

NOTE: Please submit copy either as finished artwork (a PDF of the correct size) or, if using WORD, in the simplest form. Please avoid using text boxes.

CONTENTS

	<i>Page</i>
CHURCH NEWS	4 & 5
CHURCH SERVICES	21
CONTACT DETAILS	19
DIARY	22
HAM - BONFIRE & FIREWORKS DISPLAY	27
NATURE WATCH	9
OUTWOOD BRITISH LEGION	10 & 11
OUTWOOD FILM CLUB	22
OUTWOOD HORT. SOC.	29
PARISH COUNCIL	18 & 19
POLICE & CRIME COMMISSIONER	20
PUBLIC TRANSPORT	20
SHOESTRING PRODUCTIONS	25
ST. CATHERINE'S HOSPICE	13
W.I.	7

MULTI-AWARD WINNING GARDEN DESIGNERS, PLANTERS & KEEPERS

Led by garden designer Nic Howard, at We Love Plants offer comprehensive solution for gardens of all shapes and sizes, our services include:

- Garden Design & Construction
- Inspirational Planting Schemes
- Specialised Maintenance
- Source & Supply of Garden Furniture

**we love
Plants**
GARDEN DESIGN
BY NIC HOWARD

01883 744 020 | we-love-plants.co.uk | hello@weloveplants.co



@nichoward



Nic Howard Garden Design

REPUTATION FOR TOP QUALITY ROOFING



NFRFC
LEADING ROOFING EXCELLENCE



FOLAN & JOHNSON
ROOFING SPECIALISTS

Established in 1988



Checkatrade

Traditional Roofing • Slating • Leadworks • Three Layer Flat Roofing • Horsham Stone • Velux Windows



- Handmade Clay Peg Tiles • 3 Layer Felt Flat Roofing • Traditional & Contemporary Tiling
- Natural Slate • All Aspects of Leadwork to BS1178 • CSCS Compliant

Tel: 01293 784304 • Mob: 07768 695616 • info@folanandjohnson.co.uk • www.folanandjohnson.co.uk

Free estimates
& fully insured



PAC handyman
services

PAC Handyman Services is your local solution to everyday building, maintenance and installation projects within the home and garden.



Tel: 01342 843348 | 07711 939370 | www.pac-handyman.co.uk

*Have people told you
you're ...*



We are recruiting **NOW**
for **Care Professionals**
to support our elderly clients
in their **Own Homes**.

www.homeinstead.co.uk/reigate



**Home
Instead**

To us, it's personal

**NO EXPERIENCE NECESSARY
FULL TRAINING GIVEN
£24.30 per visit [min].**

01737 529 793

lindsey.blake@homeinstead.co.uk